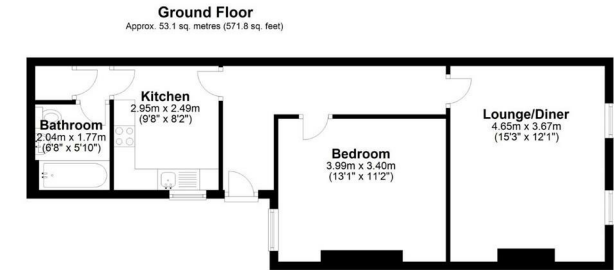


Horton & Senate



Total area: approx. 53.1 sq. metres (571.8 sq. feet)



45a Station Road, Knowle, Solihull, B93 0HN

£750

- 1st Floor Flat
- Off Road Parking
- Council Tax Band A
- Unfurnished
- 1 Double Bedroom
- Fitted Kitchen
- EPC Rating E
- Lounge/Diner
- Bathroom with Shower
- Available June

49a Station Road, Knowle, Solihull, West Midlands, B93 0HN
01564 773200

info@senateproperty.co.uk

45a Station Road, Solihull B93 0HN

Horton & Senate are pleased to offer this one double bedroom first floor flat over a retail premises on Station Road in Knowle with off road parking to rear. Located close to the amenities in Knowle and with M42 motorway link and Dorridge train station close by. Benefiting from electric heating and comprising of private rear entrance, entrance hallway, lounge/diner, double bedroom, fitted kitchen and bathroom with shower. Available June

1

1

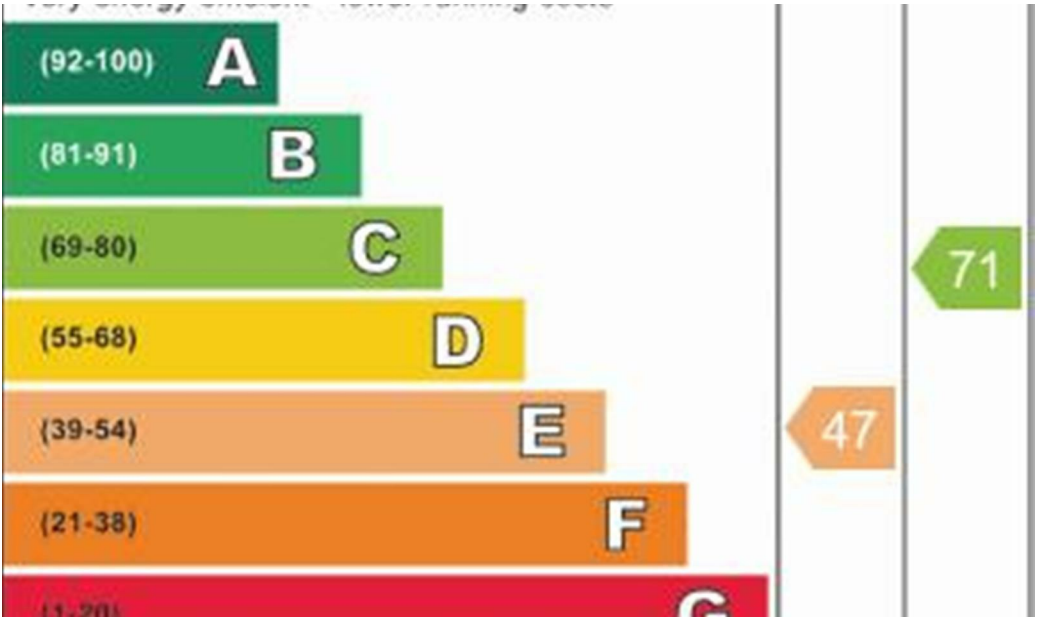
1

E

Council Tax Band: A









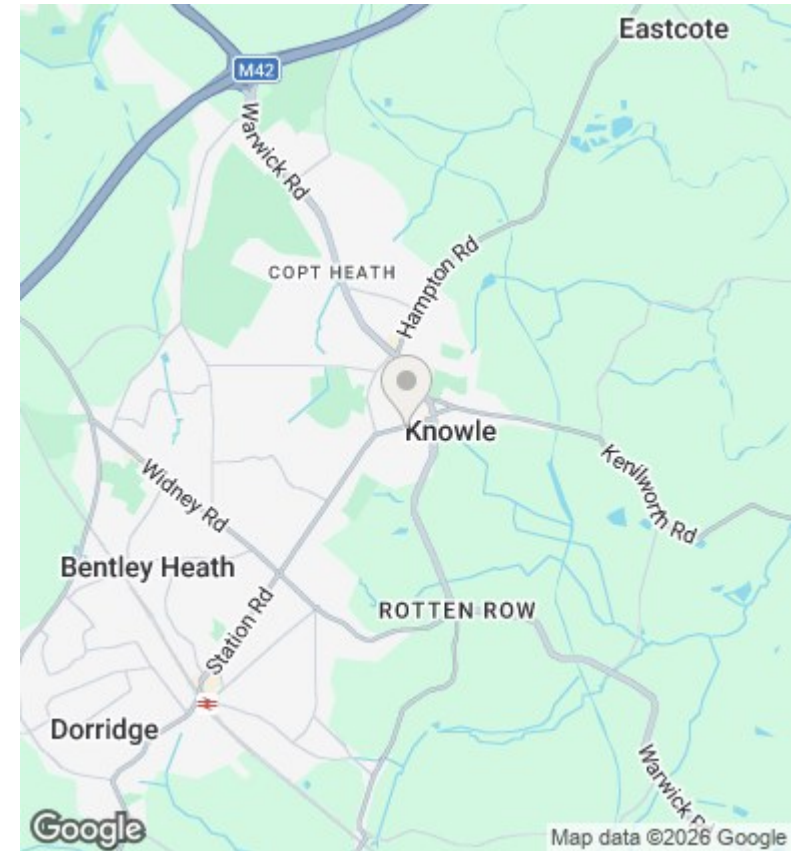
Ground Floor

Approx. 53.1 sq. metres (571.8 sq. feet)



Total area: approx. 53.1 sq. metres (571.8 sq. feet)

This floor plan is not to scale and is for illustration/marketing purposes of Senate Property Services Ltd.
Plan produced using PlanUp.



Directions

Viewings

Viewings by arrangement only. Call 01564 773200 to make an appointment.

Council Tax Band

C

Energy Efficiency Rating		
	Current	Potential
<i>Very energy efficient - lower running costs</i>		
(92 plus) A		
(81-91) B		
(69-80) C		71
(55-68) D		
(39-54) E	47	
(21-38) F		
(1-20) G		
<i>Not energy efficient - higher running costs</i>		
England & Wales	EU Directive 2002/91/EC	